

A Compendium of Canonical Characters



The Return of Sherlock Holmes

Canonical Characters



Sidney Paget,
January, 1904

The Adventure of the Solitary Cyclist



"The Adventure of the Solitary Cyclist" *(The Return of Sherlock Holmes)*

01

- 01 - Cover Card
- 02 - Cover Card
- 03 - Summary
- 04 - Filmography / Radiography
- 05 - Sherlock Holmes
- 06 - John Watson
- 07 - Bob Carruthers

Canonical Characters



Reginald G. Russom,
March, 1905

The Adventure of the Solitary Cyclist

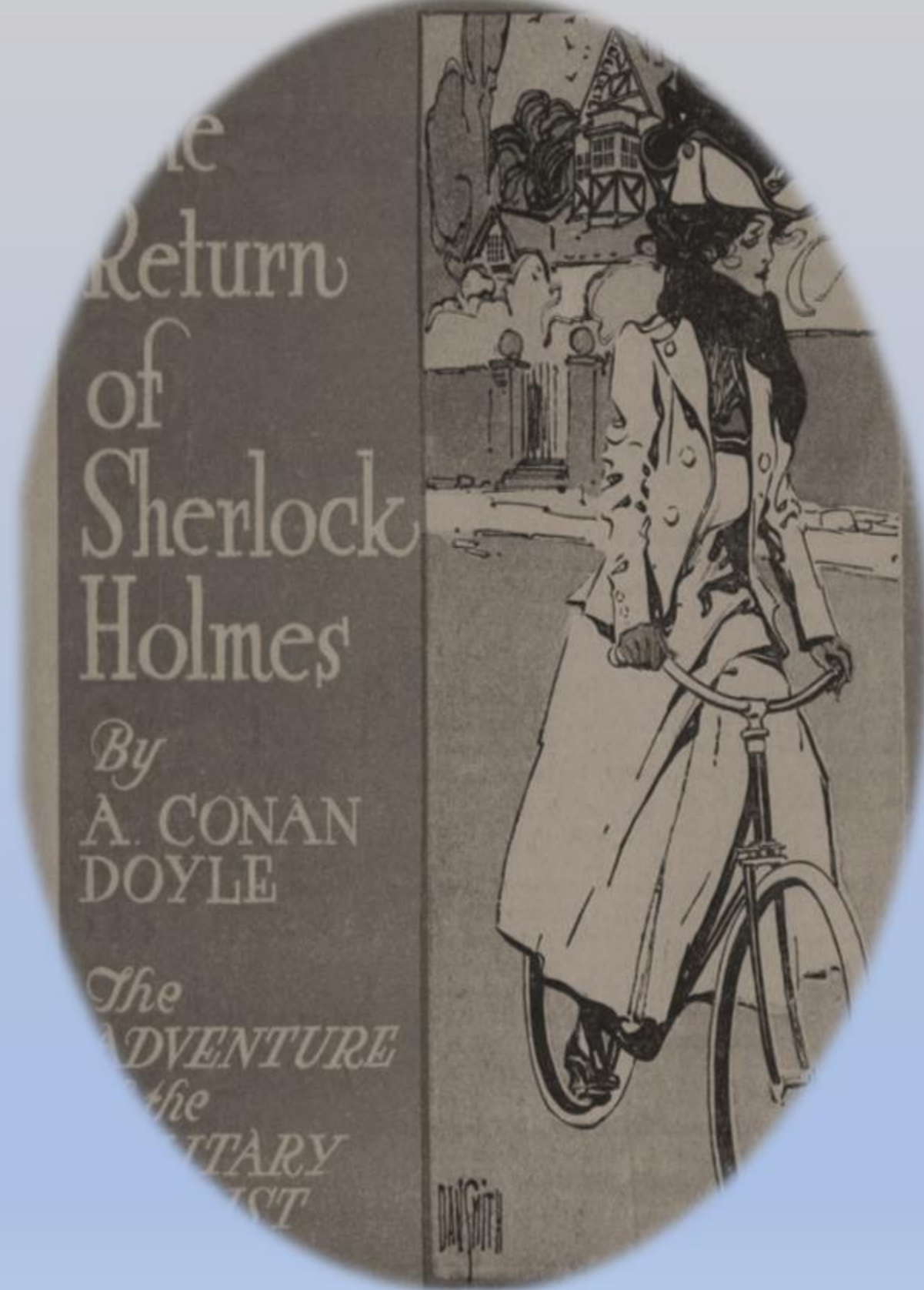


"The Adventure of the Solitary Cyclist" *(The Return of Sherlock Holmes)*

02

- 08 - Violet Smith
- 09 - Jack Woodley
- 10 - Mr. Williamson
- 11 - Cyril Morton
- 12 -- Peter
- 13 - Data! Data!

Canonical Characters



The Adventure of the Solitary Cyclist



“The Adventure of the Solitary Cyclist”

03

(The Return of Sherlock Holmes)

Holmes and Watson are contacted by a young music teacher named Violet Smith, who has been hired by Carruthers (a widower) to teach to his daughter. Carruthers, and his friend, Woodley, were friends of Violet’s uncle and were asked to take care of his closest relatives.

However, Violet is being stalked by a stranger who follows her when she bicycles to and from the train station each weekend. This man appears and disappears mysteriously.

Woodley has treated her roughly and made unwanted advances.

Can Holmes determine the identity of the mysterious cyclist and whether he, or Woodley, poses a serious threat to the young woman?

Canonical Characters



Martin Van Maële,
1905

The Adventure of the Solitary Cyclist



“The Adventure of the Solitary Cyclist” (*The Return of Sherlock Holmes*)

04

Filmography

<u>Date</u>	<u>Country</u>	<u>Holmes</u>	<u>Watson</u>
April, 1921	UK	Eille Norwood	Hubert Willis
December 09, 1968	UK	Peter Cushing	Nigel Stock
May 15, 1984	UK	Jeremy Brett	David Burke
1989	FR	Jean Clement	Phillippe Nahon

Radiography

<u>Date</u>	<u>Network</u>	<u>Holmes</u>	<u>Watson</u>
April 27, 1931	NBC	Richard Gordon	Leigh Lovell
June 20, 1936	Mutual/ NBC	Louis Hector	Harry West
October 26, 1941	Blue (NBC)	Basil Rathbone	Nigel Bruce
November 30, 1954	NBC	John Gielgud	Ralph Richardson
February 27, 1955			
August 21, 1964	BBC	Carleton Hobbs	Norman Shelley
1967			
August 06, 1978	BBC	Barry Foster	David Buck
1987	BBC	Roy Marsden	John Moffatt
March 17, 1993	BBC	Clive Merrison	Michael Williams

Canonical Characters



Sherlock Holmes



“The Adventure of the
Solitary Cyclist”
(The Return of Sherlock Holmes)

05

“The next few minutes were delicious. It was a straight left against a slogging ruffian. I emerged as you see me. Mr. Woodley went home in a cart.”

*“It's abduction, Watson—
abduction! Murder! Heaven
knows what!”*

*“You, Carruthers, give me that
revolver. We'll have no more
violence. Come, hand it over!”*

(Jean Clément, 1989, La Cycliste Solitaire)

Canonical Characters



John Watson



“The Adventure of the Solitary Cyclist”

06

(The Return of Sherlock Holmes)

“For the year 1895, I find that it was upon Saturday, the 23rd of April, that we first heard of Miss Violet Smith,... the solitary cyclist of Charlington.”

“I saw a cyclist riding down from the opposite direction to that in which I had come. He was clad in a dark suit, and I saw that he had a black beard.”

“What should I have done?”

(Phillippe Nahon, 1989, La Cycliste Solitaire)

Canonical Characters



Bob Carruthers



“The Adventure of the Solitary Cyclist”

07

(The Return of Sherlock Holmes)

Widower living at Chilthern Grange. “He was a dark, sallow, clean-shaven, silent person, but he had polite manners and a pleasant smile.” Hired Smith to teach music to his ten-year old daughter. Shot Woodley.

“I am Bob Carruthers, and I'll see this woman righted, if I have to swing for it. I told you what I'd do if you molested her, and, by the Lord! I'll be as good as my word.”

(Charles Tingwell, 1968, *Sherlock Holmes*, “The Solitary Cyclist”)

Canonical Characters



Violet Smith



“The Adventure of the Solitary Cyclist”

08

(The Return of Sherlock Holmes)

Hired by Carruthers as a governess to teach music to his daughter. Inherited fortune from her uncle Ralph. Married Cyril Morton

Mr. Woodley *“was a dreadful person—a bully to everyone else, but to me something infinitely worse. He made odious love to me, boasted of his wealth, said that if I married him, I could have the finest diamonds in London.”*

(Barbara Wilshire, 1984, *The Adventures of Sherlock Holmes*, “The Solitary Cyclist”)

Canonical Characters



Jack Woodley



“The Adventure of the Solitary Cyclist”

09

(The Return of Sherlock Holmes)

“A most odious person—a coarse, puffy-faced, red-moustached young man, with his hair plastered down on each side of his forehead.”

“Well, you and your pals have just come in time for me to be able to introduce you to Mrs. Woodley.”

Sentenced to ten years in prison
for abduction.

(Michael Siberry, 1984, *The Adventures of Sherlock Holmes*, “The Solitary Cyclist”)

Canonical Characters



Mr. Williamson



“The Adventure of the
Solitary Cyclist”
(The Return of Sherlock Holmes)

10

Defrocked clergyman with a
white beard, residing at
Charlington Hall.

He performed wedding rites for
Woodley and Miss Smith.

*“I have been ordained. Once a
clergyman, always a clergyman.”*

Sentenced to seven years for
abduction.

(Dale Ellis, 1984, *The Adventures of Sherlock Holmes*, “The Solitary
Cyclist”)

Canonical Characters



Cyril Morton



“The Adventure of the Solitary Cyclist”

11

(The Return of Sherlock Holmes)

An electrical engineer employed by Midland Electrical Company. After marrying Violet Smith he became the senior partner of Morton & Kennedy, the famous Westminster electricians.

“I thought that he was perfectly hateful -- and I was sure that Cyril would not wish me to know such a person.”

“Oh, Cyril is his name!” said Holmes, smiling.

Canonical Characters



Peter



“The Adventure of the Solitary Cyclist” *(The Return of Sherlock Holmes)*

12

Groom who was driving Miss Smith and was waylaid while Violet was abducted.

“A young fellow about seventeen, dressed like an ostler, with leather cords and gaiters. He lay upon his back, his knees drawn up, a terrible cut upon his head.”

“That's Peter, the groom, he drove her. The beasts have pulled him off and clubbed him.”

“Let him lie; we can't do him any good...”

(Charles Tingwell, 1968, Sherlock Holmes, “The Solitary Cyclist”)

Canonical Characters



Sidney Paget,
January, 1904

The Adventure of the Solitary Cyclist



"The Adventure of the Solitary Cyclist" (*The Return of Sherlock Holmes*)

13

First
Publication:

U.K. -- *The Strand Magazine*,
January, 1904
U.S. - *Collier's*
December 26, 1903

U.K. - *The Return of Sherlock Holmes*,
March 07, 1905 George Newnes Ltd.
U.S. - *The Return of Sherlock Holmes*,
February, 1905, McClure, Phillips & Co.

Chronological
Date:

April 23, 1895
(Watson)
April 13, 1895
(Baring-Gould)

Ranking:

20 of 56 short stories
(Sherlockian poll, 1999, Stock)

Christ
Abbreviation:

SOLI