

A Compendium of Canonical Characters



The Return of Sherlock Holmes

Canonical Characters



Sidney Paget,
December, 1904

The Adventure of the Second Stain



"The Adventure of Second Stain"

01

(The Return of Sherlock Holmes)

- 01 - Cover Card
- 02 - Cover Card
- 03 - Summary
- 04 - Filmography / Radiography
- 05 - Sherlock Holmes
- 06 - John Watson
- 07 - Trelawney Hope
- 08 - Lord Bellinger

Canonical Characters



Frederic Dorr Steele,
January, 1905

The Adventure of the Second Stain



"The Adventure of Second Stain"

02

(The Return of Sherlock Holmes)

- 09 - Lady Hilda Trelawney Hope
- 10 - Eduardo Lucas
- 11 - John Mitton
- 12 -- Mme. Henri Fournaye
- 13 -- Inspector Lestrade
- 14 -- Constable MacPherson
- 15 - The Second Stain
- 16 - Data! Data! Data!

Canonical Characters



The Adventure of the Second Stain



“The Adventure of Second Stain”

03

(The Return of Sherlock Holmes)

Trelawney Hope, the minister of European Affairs, asks Holmes to recover a letter from a foreign monarch that, if published, could lead to war.

Holmes uncovers a foreign spy's blackmail of the minister's wife.

Will Holmes recover the letter in time to prevent a war?

Canonical Characters



Stanley Armstrong,
May, 1905

The Adventure of the Second Stain



"The Adventure of Second Stain"

04

(The Return of Sherlock Holmes)

Filmography

<u>Date</u>	<u>Country</u>	<u>Holmes</u>	<u>Watson</u>
March, 1922	UK	Eille Norwood	Hubert Willis
December, 1951	UK	Alan Wheatley	Raymond Francis
September, 1968	UK	Peter Cushing	Nigel Stock
July, 1986	UK	Jeremy Brett	Edward Harwicke

Radiography

<u>Date</u>	<u>Network</u>	<u>Holmes</u>	<u>Watson</u>
June 23, 1932	NBC	Richard Gordon	Leigh Lovell
January 29, 1940	Blue (NBC)	Basil Rathbone	Nigel Bruce
January 04, 1942	Blue (NBC)	Basil Rathbone	Nigel Bruce
November 16, 1954	NBC	John Gielgud	Ralph Richardson
January 30, 1955	NBC	John Gielgud	Ralph Richardson
1958		Maurice Teynac	Pierre Mondy
January 09, 1967	BBC	Carleton Hobbs	Norman Shelley
1987	BBC	Roy Marsden	John Moffatt
October 13, 1993	BBC	Clive Merrison	Michael Williams

Canonical Characters



Sherlock Holmes



"The Adventure of Second Stain"

05

(The Return of Sherlock Holmes)

"Now, Watson, the fair sex is your department, what was the fair lady's game? What did she really want?"

"It is a case, my dear Watson, where the law is as dangerous to us as the criminals are. Every man's hand is against us, and yet the interests at stake are colossal."

"We also have our diplomatic secrets"

(Matt Frewer, 2001, The Hound of the Baskervilles)

Canonical Characters



John Watson



“The Adventure of Second Stain”

06

(The Return of Sherlock Holmes)

Holmes “has definitely retired from London and betaken himself to study and bee-farming on the Sussex Downs.”

“From out of her bosom Lady Hilda had drawn a small key. The box ... was stuffed with papers. Holmes thrust the blue envelope deep down into the heart of them, between the leaves of some other document. The box was shut, locked, and returned to the bedroom.”

“Surely her own statement is clear and her anxiety very natural.”

(Kenneth Walsh, 2001, The Hound of the Baskervilles)

Canonical Characters



Trelawney Hope



“The Adventure of Second Stain”

07

(The Return of Sherlock Holmes)

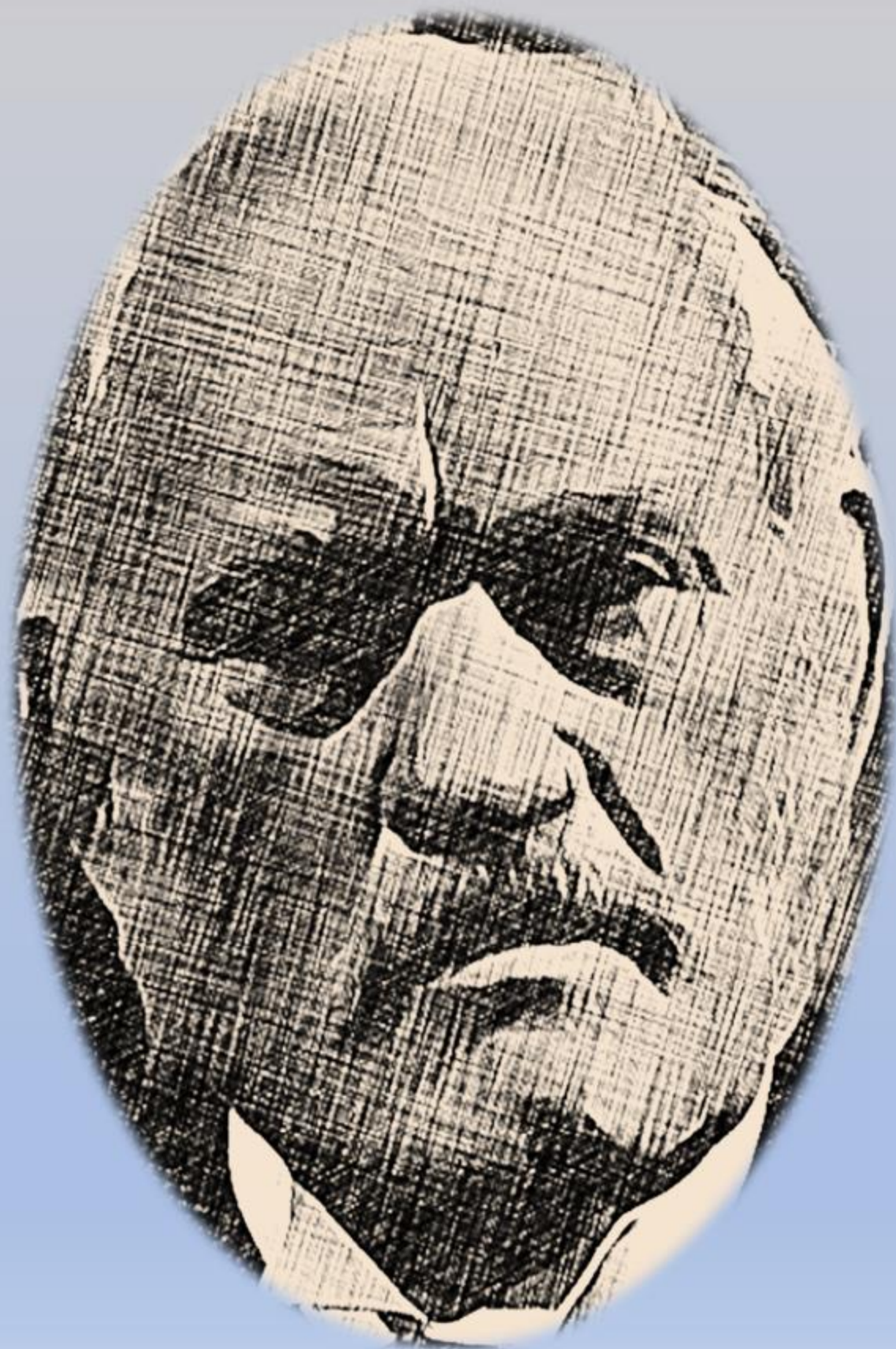
Secretary for European Affairs
and the most rising statesman in
the country.

*“The document in question is of
such immense importance that
... peace or war may hang upon
the issue.”*

*“Mr. Holmes, you are a wizard,
a sorcerer! How did you know it
was there?”*

(Stuart Wilson, 1986, *The Return of Sherlock Holmes*,
“The Second Stain”)

Canonical Characters



Lord Bellinger



“The Adventure of Second Stain”

08

(The Return of Sherlock Holmes)

Twice Premier of Britain.

“Mr. Holmes, the envelope is a long, thin one of pale blue colour. There is a seal of red wax stamped with a crouching lion.”

“I do not hesitate to say that within a week of the publication of that letter this country would be involved in a great war.”

“Come, sir, there is more in this than meets the eye. How came the letter back in the box?”

(Harry Andrews, 1986, *The Return of Sherlock Holmes*, “The Second Stain”)

Canonical Characters



Lady Hilda Trelawney Hope



"The Adventure of Second Stain"

05

(The Return of Sherlock Holmes)

"Now, Watson, the fair sex is your department, what was the fair lady's game? What did she really want?"

"It is a case, my dear Watson, where the law is as dangerous to us as the criminals are. Every man's hand is against us, and yet the interests at stake are colossal."

"We also have our diplomatic secrets"

(Matt Frewer, 2001, The Hound of the Baskervilles)

Canonical Characters



Eduardo Lucas



“The Adventure of Second Stain”

10

(The Return of Sherlock Holmes)

aka Henri Fournaye, lived a double life as a spy in Paris and London. Was murdered in his house by his wife. Black-mailed Lady Hope.

“Well known in society circles both on account of his charming personality and the well-deserved reputation of being one of the best amateur tenors in the country.”

*(Yves Beneyton, 1986, The Return of Sherlock Holmes,
“The Second Stain”)*

Canonical Characters



John Mitton



“The Adventure of Second Stain”

11

(The Return of Sherlock Holmes)

Valet of Eduardo Lucas who was arrested for his murder. “But no case could be sustained against him. He had visited friends in Hammersmith that night. The ALIBI was complete.”

“He appeared to be overwhelmed by the unexpected tragedy. He had always been on good terms with his master.”

—
(Freddie Earlie, 1968, *Sherlock Holmes*,
“The Second Stain”)

Canonical Characters



Mme. Henri Fournaye



“The Adventure of Second Stain”

12

(The Return of Sherlock Holmes)

Wife of Eduardo Lucas who lived in Paris and stabbed her husband to death in London.

“Was reported to the authorities by her servants as being insane.”

“A woman answering to her description attracted much attention at Charing Cross Station on Tuesday morning by the wildness of her appearance and the violence of her gestures.”

(Yvonne Orengo, 1986, The Return of Sherlock Holmes, “The Second Stain”)

Canonical Characters



Inspector Lestrade



“The Adventure of Second Stain”

13

(The Return of Sherlock Holmes)

“She knocked at the door—surprise visit, he let her in. She told him how she had traced him, reproached him. One thing led to another, and then with that dagger so handy the end soon came.”

“You see that stain on the carpet? Well, a great deal must have soaked through, must it not? Well, you will be surprised to hear that there is no stain on the white woodwork to correspond.”

*(Colin Jeavons, 1986, The Return of Sherlock Holmes,
“The Second Stain”)*

Canonical Characters



Constable MacPherson



“The Adventure of Second Stain”

14

(The Return of Sherlock Holmes)

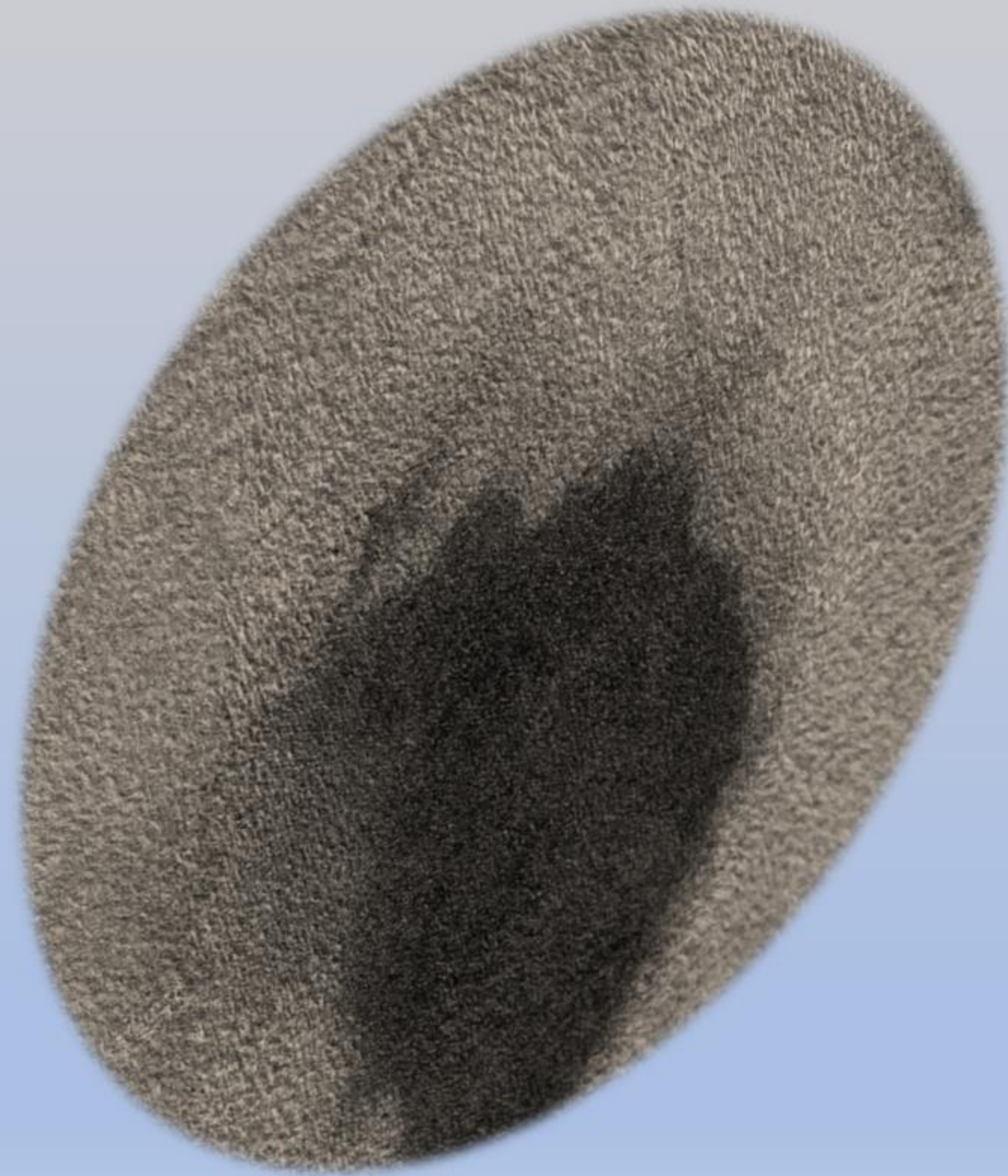
On duty when Lady Hope came to the scene of Lucas' death.

“The young woman came to the door last evening. She wanted to see where the crime was done. She was a very respectable, well-spoken young woman, sir, and I saw no harm in letting her have a peep.”

“Oh, officer, do let me have a peep!” says she. She had pretty, coaxing ways.”

—
(Sean Scanlan, 1986, *The Return of Sherlock Holmes*,
“The Second Stain”)

Canonical Characters



The Second Stain



“The Adventure of Second Stain”

15

(The Return of Sherlock Holmes)

Lestrade asks Holmes to come to Lucas's home to see something that puzzles the inspector: The blood stain on the carpet and the one on the floor don't match.

The carpet has then been turned round after the murder, which, Holmes points out, means the constable must have let someone come in the house.

“Why, it is simple enough. The two stains did correspond, but the carpet has been turned round. As it was square and unfastened, it was easily done.”

Canonical Characters



Sidney Paget,
December, 1904

The Adventure of the Second Stain



“The Adventure of Second Stain”

16

(The Return of Sherlock Holmes)

First
Publication:

U.K. -- *The Strand Magazine*,
December, 1904
U.S. - *Collier's*
January 28, 1905

U.K. - *The Return of Sherlock Holmes*,
March 07, 1905 George Newnes Ltd.
U.S. - *The Return of Sherlock Holmes*,
February, 1905, McClure, Phillips & Co.

Chronological
Date:

n/a
(Watson)
October 12, 1886
(Baring-Gould)

Ranking:

17 of 56 short stories
(Sherlockian poll, 1999, Stock)

Christ
Abbreviation:

SECO