

A Compendium of Canonical Characters



The Casebook of Sherlock Holmes

Canonical Characters



Frank Wiles,
January, 1927

The Adventure of the Retired Colourman



"The Adventure of the Retired Colourman" 01

(The Casebook of Sherlock Holmes)

- 01 - Cover Card
- 02 - Cover Card
- 03 - Summary
- 04 - Filmography / Radiography
- 05 - Sherlock Holmes
- 06 - John Watson
- 07 - Mrs. Amberley
- 08 - Josiah Amberley

Canonical Characters



Frederic Dorr Steele,
December, 1926

The Adventure of the Retired Colourman



"The Adventure of the Retired Colourman" 02

(The Casebook of Sherlock Holmes)

- 09 - Detective Barker
- 10 - Reverend J. C. Elman
- 11 - Dr. Raymond Ernest
- 12 - The Haven
- 13 - Inspector MacKinnon
- 14 - Coal Gas
- 15 - Data! Data! Data!

Canonical Characters



The Adventure of the Retired Colourman



"The Adventure of the Retired Colourman" 03

(The Casebook of Sherlock Holmes)

Josiah Amberley, a retired paint manufacturer comes to Baker Street to seek Holmes' help in tracking down his missing wife and a doctor he played chess with.

He claims they ran off with his money and securities.

Will Holmes find the missing pair? Is there more to Amberley's story?

Canonical Characters



Frederic Dorr Steele,
December, 1926

The Adventure of the Retired Colourman



"The Adventure of the Retired 04

Colourman"

(The Casebook of Sherlock Holmes)

Filmography

<u>Date</u>	<u>Country</u>	<u>Holmes</u>	<u>Watson</u>
May, 1965	UK	Douglas Wilmer	Nigel Stock

Radiography

<u>Date</u>	<u>Network</u>	<u>Holmes</u>	<u>Watson</u>
April 06, 1931	NBC	Richard Gordon	Leigh Lovell
March 11, 1940	Blue (NBC)	Basil Rathbone	Nigel Bruce
September 03, 1943	Mutual	Basil Rathbone	Nigel Bruce
October 09, 1964	BBC	Carleton Hobbs	Norman Shelley
July 10, 1967	SAB	Robert Langford	Kenneth Baker
March 29, 1995	BBC	Clive Merrison	Michael Williams
April 19, 2009	Jim French	John Patrick Lowrie	Lawrence Albert

Canonical Characters



Sherlock Holmes



"The Adventure of the Retired Colourman" 05

(The Casebook of Sherlock Holmes)

"The old story, Watson. A treacherous friend and a fickle wife. It would appear that Amberley has one hobby in life, and it is chess."

"With your natural advantages, Watson, every lady is your helper and accomplice."

"What did you do with the bodies?"

"Burglary has always been an alternative profession had I cared to adopt it."

(Jonathan Pryce, 2007, Sherlock Holmes and the Baker Street Irregulars)

Canonical Characters



John Watson



“The Adventure of the Retired Colourman” 06

(The Casebook of Sherlock Holmes)

“What did you think of him?”

“A pathetic, futile, broken creature.”

“I was struck by the snaky locks of grizzled hair which curled from under his old straw hat, and his face with its fierce, eager expression and the deeply lined features.”

“The man sprang to his feet with a hoarse scream. He clawed into the air with his bony hands. In a flash we got a glimpse of the real Josiah Amberley, a misshapen demon with a soul as distorted as his body.”

(Bill Patterson, 2007, Sherlock Holmes and the Baker Street Irregulars)

Canonical Characters



Mrs. Amberley



"The Adventure of the Retired Colourman" 07

(*The Casebook of Sherlock Holmes*)

Married Josiah Amberley in
1897 and moved to Lewisham.

Disappeared and was found
dead along with Dr. Raymond
Ernest in a disused well on the
property.

Accused by Amberley of
having an affair with Dr. Ernest
and leaving with his cash and
securities.

(Lesley Saweard, 1965, *Sherlock Holmes*, "The Retired Colourman")

Canonical Characters



Josiah Amberley



“The Adventure of the Retired Colourman” 08

(The Casebook of Sherlock Holmes)

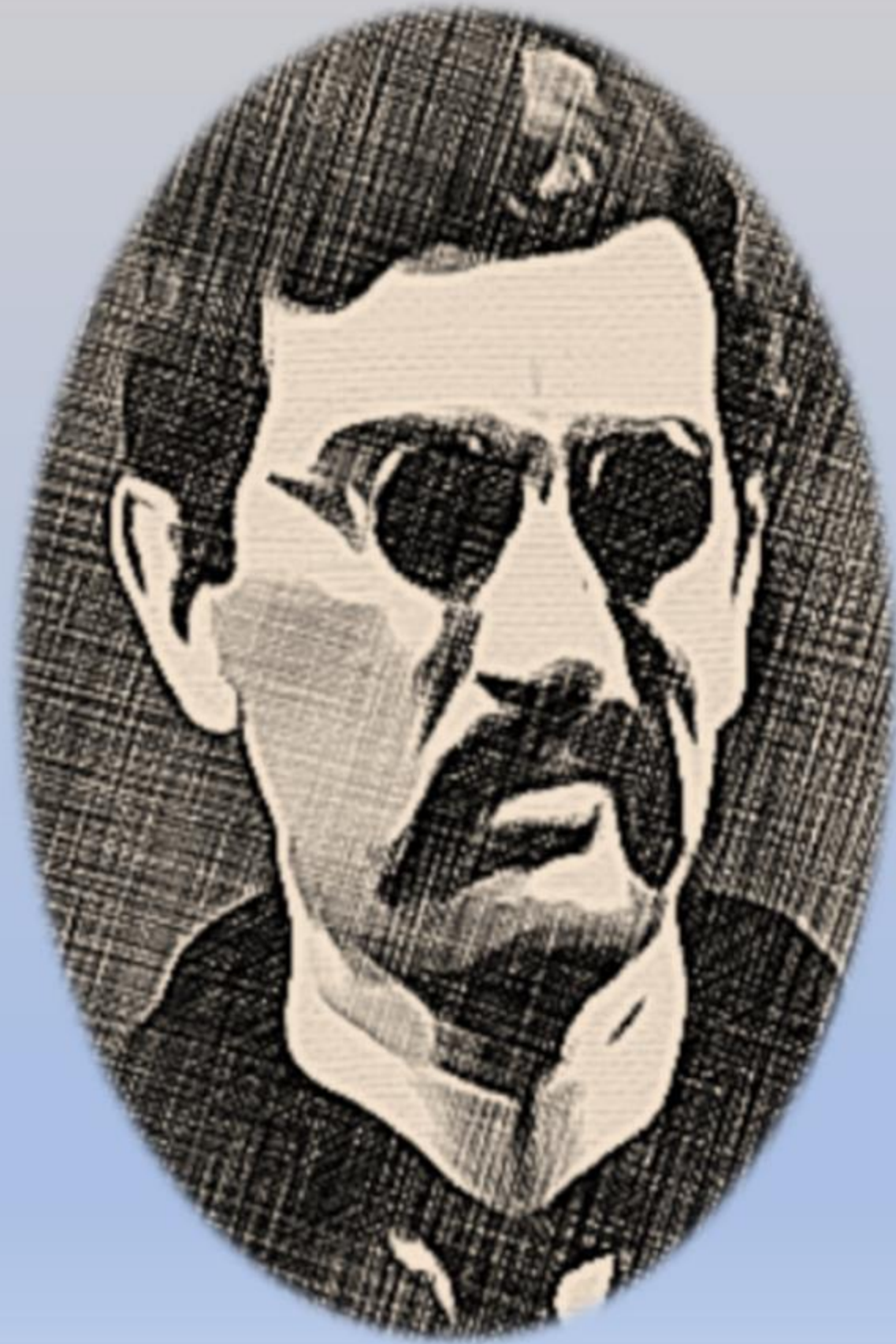
Hired Holmes to find his missing wife. Junior partner of Brickfall and Amberley, manufacturers of artistic materials. Retired at 61 and married a woman 20 years younger. Played chess regularly with Dr. Raymond Ernest at his home, The Haven in Lewisham.

“Amberley excelled at chess—one mark, Watson, of a scheming mind. Like all misers, he was a jealous man, and his jealousy became a frantic mania. Rightly or wrongly, he suspected an intrigue. He determined to have his revenge, and he planned it with diabolical cleverness.”

“I hardly expected, that so humble an individual as myself, especially after my heavy financial loss, could obtain the complete attention of so famous a man as Mr Sherlock Holmes.”

(Maurice Denham, 1965, *Sherlock Holmes*, “The Retired Colourman”)

Canonical Characters



Detective Barker



“The Adventure of the Retired Colourman” 09

(The Casebook of Sherlock Holmes)

A detective hired by Dr. Ernest’s family to find his whereabouts after he disappeared.

“A dark man with gray-tinted glasses and a large Masonic pin projecting from his tie.”

“He is my hated rival upon the Surrey shore. His methods are irregular, no doubt, like my own.”

—
(Peter Henchie, 1965, *Sherlock Holmes*, “The Retired Colourman”)

Canonical Characters



Reverend J.C. Elman



“The Adventure of the Retired Colourman” 10

(The Casebook of Sherlock Holmes)

Vicar in Little Purlington in
Essex was visited by Watson
and Amberley in response to a
telegram.

“My wire! I sent no wire.”

*“There is only one vicarage, sir,
and only one vicar, and this
wire is a scandalous forgery, the
origin of which shall certainly be
investigated by the police.”*

(Christopher Banks, 1965, *Sherlock Holmes*, “The Retired
Colourman”)

Canonical Characters



Dr. Raymond Ernest



“The Adventure of the Retired Colourman” 11

(The Casebook of Sherlock Holmes)

Unmarried Doctor who played
chess with Josiah Amberley at
The Haven.

Accused by Amberley of having
an affair with his wife and leaving
with his cash and securities.

“The poor devil was on the floor
dying when he wrote it. He lost
his senses before he could finish.
He was writing, ‘We were
murdered.’”

(William Wilde, 1965, Sherlock Holmes, “The Retired Colourman”)

Canonical Characters



The Haven



"The Adventure of the Retired Colourman" 12

(The Casebook of Sherlock Holmes)

Josiah Amberley's residence
in Lewisham.

"The garden was all running
to seed, giving ... an
impression of wild neglect in
which the plants had been
allowed to find the way of
Nature rather than of art.

The house, too, was
slatternly to the last degree."

Canonical Characters



Inspector MacKinnon



"The Adventure of the Retired Colourman" 13

(The Casebook of Sherlock Holmes)

Smart, young Scotland Yard police inspector who investigated Mrs. Amberley's and Dr. Ernest's disappearance.

"You say that the prisoner, in the presence of three witnesses, practically confessed by trying to commit suicide, that he had murdered his wife and her lover?"

Mackinnon discovered the bodies in a disused well on the property, cleverly concealed by a dog kennel.

Canonical Characters



Coal Gas



“The Adventure of the Retired Colourman” 14

(The Casebook of Sherlock Holmes)

A flammable gaseous fuel made from coal and supplied to the user via a piped distribution system. It is produced when coal is heated strongly in the absence of air.

“You see the gas-pipe along the skirting here. Very good. The pipe runs out into the strong-room, as you can see, and ends in that plastered rose in the centre of the ceiling, where it is concealed by the ornamentation. That end is wide open. At any moment by turning the outside tap the room could be flooded with gas. With door and shutter closed and the tap full on I would not give two minutes of conscious sensation to anyone shut up in that little chamber.”

Canonical Characters



Frank Willis,
January, 1927

The Adventure of the Retired Colourman



"The Adventure of the Retired Colourman" 15

(*The Casebook of Sherlock Holmes*)

First
Publication:

U.K. -- *The Strand Magazine*,
January, 1927
U.S. - *Liberty*
December 18, 1926

U.K. - *The Casebook of Sherlock
Holmes*,
October, 1917, John Murray
U.S. - *The Casebook of Sherlock
Holmes*,
October, 1917, George H. Doran

Chronological
Date:

n/a
(Watson)
July 28, 1898
(Baring-Gould)

Ranking:

47 of 56 short stories
(Sherlockian poll, 1999, Stock)

Christ
Abbreviation:

RETI