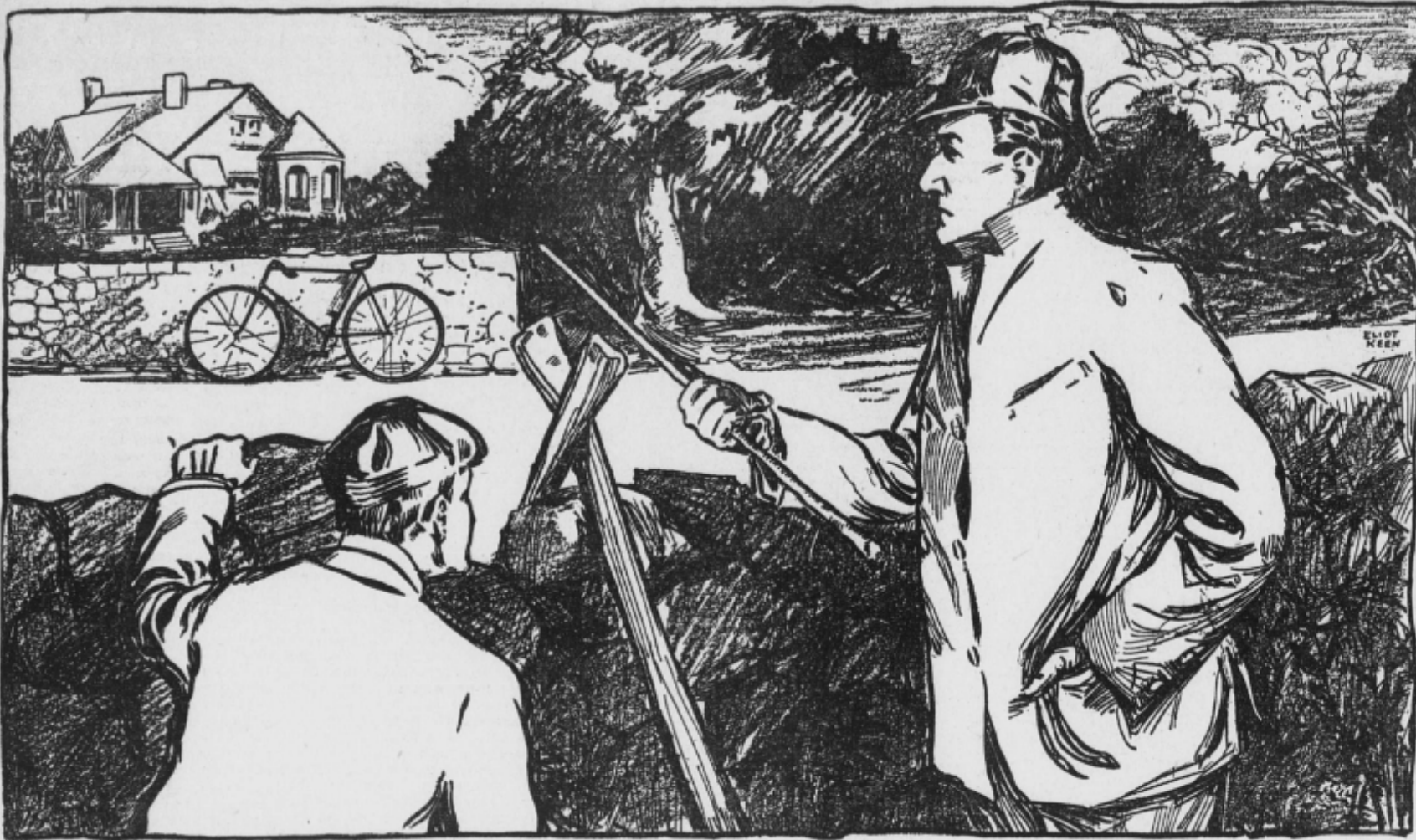




Mystery Connected With the Solitary Cycle





October 1, 1905

Mystery Connected With the Solitary Cycle

"The first essential of a good detective," said **Sherlock** Holmes, "is keen observation and then Intelligent deduction."

"I guess I can see all right," answered the young man.

"Well, then," said Holmes, "see that bicycle over there? Now, I see that that is the property of a man of eccentric disposition."

"I don't see that, I'm afraid. How do you?"

"Why, a portion of the wheel shows he is a crank. I also see that he is a huckster by profession; that he sells tableware. I see a clew that shows his favorite composer. He is now probably resting near here, as there is a clew showing that he soon wearies of riding."

Can you solve the mystery?





Detective's report on THE MYSTERY CONNECTED
WITH THE SOLITARY CYCLE

1. By profession the bicycle's owner is a huckster or in other words a

2. He sells tablewear shown by the bicycle's

3. His favourite composer is

4. He is resting because he soon wearies of riding as the bicycle is

